

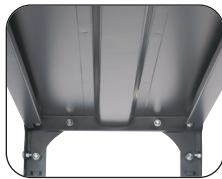
## Heavy-Duty Industrial Steel Shelving



**FEATURES:**



Corner brackets to help prevent rocking and greatly improve stability and rigidity of overall unit.



Hat channel underneath every shelf increases overall strength. Helps in prevention of bowing and deflection due to overloading.



Strong arm the competition. The box beam shelf design and double-sided compression clips support loads up to 1250 lbs. per shelf (evenly loaded). Shelves lock in place but can be easily repositioned in one-inch increments. Six shelves per shelf pack. Post Kit includes four 85" high posts (must be ordered with each Shelf Pack). Features corner brackets and hot channel. Durable Dark Gray finish. Assembly required.

Model	Description	Shelves	Dimensions W x D	Ship Weight	Price Each
6250	Industrial Shelf Pack	6	36 x 12"	38 lbs	\$160.00
6251	Industrial Shelf Pack	6	48 x 12"	56 lbs	222.00
6252	Industrial Shelf Pack	6	36 x 18"	51 lbs	186.00
6253	Industrial Shelf Pack	6	48 x 18"	76 lbs	263.00
6254	Industrial Shelf Pack	6	36 x 24"	71 lbs	227.00
6255	Industrial Shelf Pack	6	48 x 24"	96 lbs	294.00
6256	Industrial Post Kit		85½ High	25 lbs	119.00

Discount Code B

