

# RR1A / RR2A Remote Quick Start Guide

**INSTALLER:** Leave these instructions with consumer.  
**CONSUMER:** Retain for future reference.



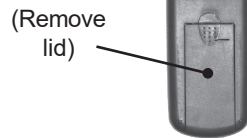
This guide serves as a supplement to any remote information found in the burner, pilot kit, and remote instructions. Read all instructions completely and carefully prior to product use. Select models shown, design may vary.

**Note:** This product is designed for use with an attended hearth appliance or fire feature. Adults must be present when the Control System is operating. DO NOT turn on, program, or thermostatically set this Control (as applicable) to operate a hearth appliance or fire feature when Adults are not physically present. Furthermore, DO NOT leave the hearth appliance or fire feature burning unattended; it may cause damage or serious injury. If an Adult is going to be away from the hearth appliance or fire feature for any length of time, then the handheld/wall mount, receiver/control module and application should be in the "OFF" position.

## I INSTALL BATTERIES

### Remote Transmitter

- Remove lid.
- Install "12V" battery (included).
- Re-secure lid.



### Remote Receiver

- Remove lid.
- install four "AA" batteries (included).
- Re-secure lid.

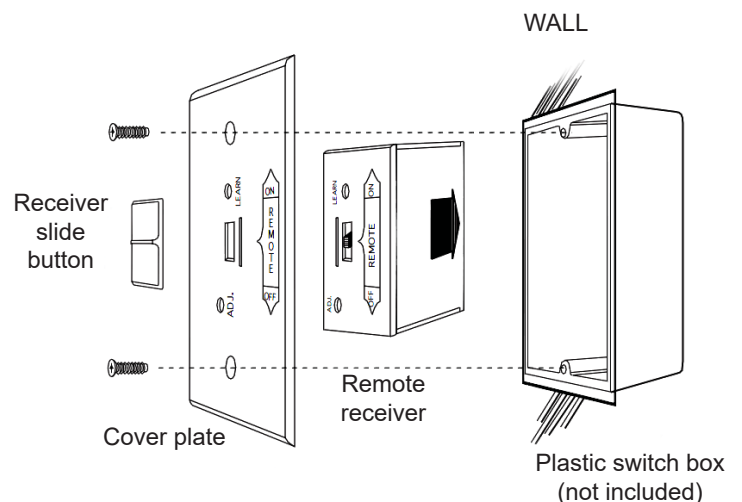


## II INSTALL WALL MOUNT (IF APPLICABLE)

### Wall Mount

- For wall mounting: refer to the remote instructions for install details.
- Route the wires to the fireplace and proceed to the following **CONNECT TO VALVE** section.

**Important:** DO NOT install 120VAC wires to remote receiver.



## III CONNECT TO VALVE

The ON/OFF switch must be in off position when using remote system.

### Connecting to a Switch Box Assembly

- Locate two free wires on switch box assembly.
- Connect remote wires.
- Ensure all connections are fully attached.

Switch box assembly design may vary, connection is the same.

Remote Receiver  
(Remote System)

Switch Box Assembly  
(Burner System)

Any ON/OFF or toggle switch (part of burner system) must be in off position when using remote system.

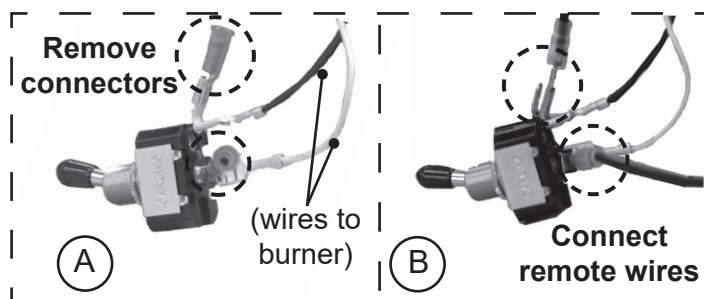
### Connecting to an 11/12 Valve

Two methods exist (depending on model):

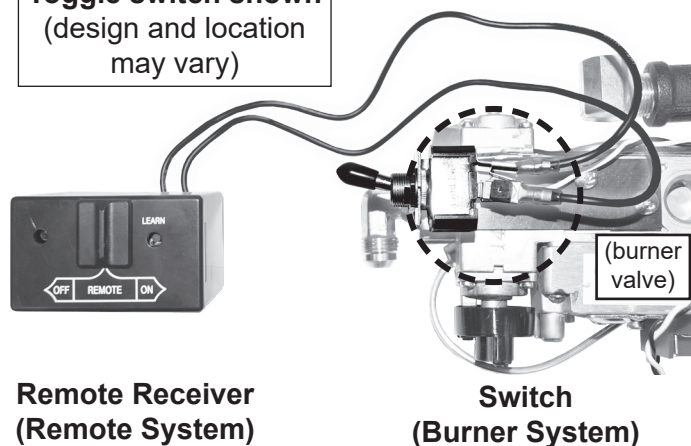
#### Toggle Switch (and select ON/OFF Switches)

- Locate switch pre-installed to burner valve.
- Remove and discard red connectors on switch (A).
- Connect remote wires to now exposed terminals (B).
- Ensure all connections are fully attached.

**Important: DO NOT** allow terminals to touch.



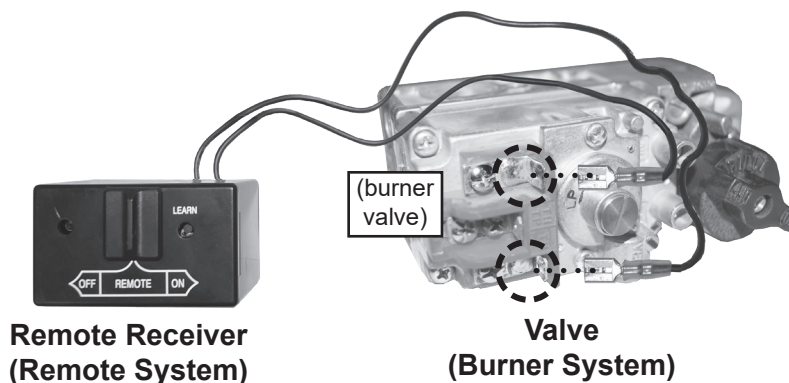
Toggle switch shown  
(design and location  
may vary)



OR

#### Valve

- Connect remote wires to exposed terminals on valve.
- Ensure all connections are fully attached.



## IV PLACE REMOTE RECEIVER (IF APPLICABLE)

Proper placement is crucial to prevent damage and overheating.

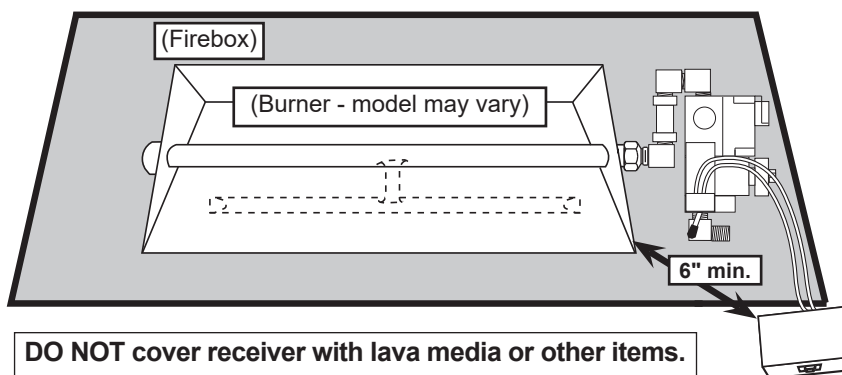
### Fireplace

If burner instructions include specific placement instructions, follow them.

- Unless otherwise stated in burner instructions, place receiver at **front right of fireplace** as far from burner system as possible.

**Important: Place receiver 6" from burner/flame (minimum).**

- Place plastic cover over receiver.



**DO NOT cover receiver with lava media or other items.**

## V PLACE DECORATIVE HEAT SHIELD (IF APPLICABLE)

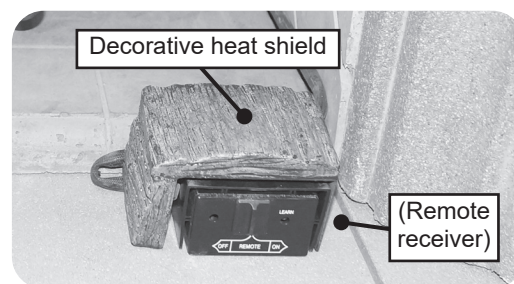
Proper placement is crucial to prevent damage and overheating to remote receiver.

### Fireplace

A decorative heat shield is to be placed over the remote receiver.

Contact your dealer for ordering information (if needed).

- Place the decorative heat shield over the remote receiver.



## VI OPERATION

Follow operation section found in burner and/or remote instructions.

**Note:** Any ON/OFF or toggle switch (part of burner system) must be in off position when using remote system.

**Note:** Be sure receiver and transmitter are within 20' - 25' operating range.

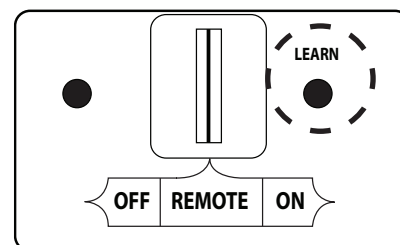
**Note:** A triple beeping receiver indicates overheating. Turn off burner, allow to completely cool, and properly relocate receiver (see above section).

## VII SYNCING REMOTE SYSTEM

**Note:** If remote does not function, and batteries with an adequate power level are installed, follow steps below.

Ensure burner system is off and completely cool.

Slide switch on remote receiver to **REMOTE** position. Use the tip of a pen or a wire clip to push the **LEARN** button and release. A beep will be heard. Then press and hold **ON** button on remote transmitter; a series of beeps should be heard. The remote system is now synced. Light burner to test.



## NOTES PAGE

Please use this page to record any information that you may want to have at hand.