

NAPOLEON<sup>®</sup>  
FIREPLACES



STARfire™ 35 shown with standard safety barrier

**AVAILABLE NOW**



# STARfire™ 35

## DIRECT VENT GAS FIREPLACE



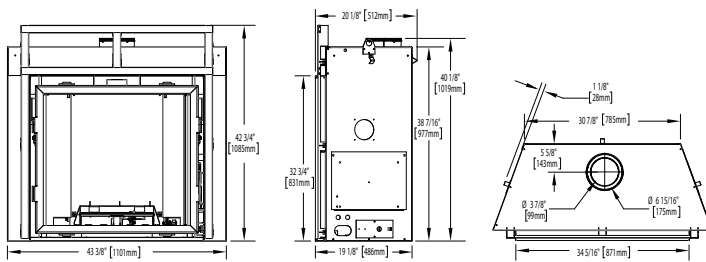
For more information or to place an order call 1-800-461-5581 or visit [napoleonfireplaces.com](http://napoleonfireplaces.com)

# STARfire™ 35

The STARfire™ 35 offers a wide range of heat output and advanced burner technology that produces a massive concentrated flame that reaches high in the firebox creating a glowing ambiance throughout the interior. "Easy Slide™" door glides into place with kitchen drawer style door glides - a Patent Pending design. The realistic hand painted PHAZER® log set is rich in colour and detail. Napoleon's STARfire™ 35 is a one of a kind fireplace that you will be proud to show to family and friends! The perfect fit for great rooms and large family rooms or for anyone looking to make a statement in their home.

## Product Features

- Exclusive Napoleon® NIGHT LIGHT™ radiates a warm glow to the room even when the fireplace is off and features four light settings
- Advanced burner technology with glowing ember bed, produces the most realistic towering flames
- Choice of CRYSTALINE™ or PHAZER® log set burner assembly
- Standard safety screen
- Convenient modulating remote control - controlling flame and NIGHT LIGHT™
- Available in natural gas and propane
- Non-combustible board included
- Optional decorative front complete with screen
- Optional arched or rectangular wrought iron decorative surround
- Optional glass ember media kits in Black, Blue, Red, Amber, Clear and Topaz
- Optional MIRRO-FLAME™ Porcelain Reflective Radiant Panels in Black, Platinum or Cappuccino (Black ceramic hearth pads are required with PRP's)
- Optional brick kits in Antique White LEDGEROCK, Custom Blend LEDGEROCK, Newport™ or Herringbone
- Optional heat circulating blower with variable speed and thermostatic control provides powerful heating performance
- Adjustable metal stud framing is provided/installed for a variety of different finishing material thicknesses



## Features/Options/Accessories



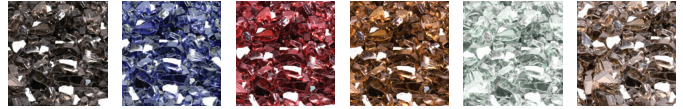
**Decorative Front with Screen**  
Painted Black Finish



**Arched Decorative Surround**  
Wrought Iron Finish



**Rectangular Decorative Surround**  
Wrought Iron Finish



**Glass Ember Media Kits**  
Black, Blue, Red, Amber, Clear and Topaz



**MIRRO-FLAME™ Porcelain Reflective Radiant Panels**  
Black, Platinum or Cappuccino



**Decorative Brick Panels**  
Antique White LEDGEROCK, Custom Blend LEDGEROCK, Newport™ or Herringbone



**CRYSTALINE™ Glass Burner Assembly**



**Exclusive NIGHT LIGHT™** **Convenient Remote Control**



Napoleon®, leaders in design & technology have developed safety screens with aesthetically pleasing designs for every gas appliance to ensure ultimate safety and peace of mind for your family.

Model	BTU'S (Input)	Top Venting	Height		Front Width		Depth		Glass Size		Efficiency	
			Actual	Framing	Actual	Framing	Actual	Framing	Height	Width	EnerGuide	Steady State
HDX35	35,000	4" & 7"	42 3/4"	43 1/4"	43 3/8"	43 7/8"	20 1/8"	20 1/2"	35 1/2"	28 5/32"	60.4%	66.7%

Certified under Canadian and American National Standards  
Figures may vary with individual conditions such as floor plan layout, insulation value/heat loss of the house and geographical location.

Consult your owner's manual for complete installation instructions, accurate framing dimensions and proper clearances to combustible material. Check all local and national building codes and gas regulations. All specifications are subject to change without prior notice due to on-going product improvements. Products may not be exactly as shown. Napoleon® is a registered trademark of Wolf Steel Ltd. © Wolf Steel Ltd.



24 Napoleon Road, Barrie, Ontario, Canada L4M 0G8  
103 Miller Drive, Crittenden, Kentucky, USA 41030  
7200 Trans Canada Highway, Montreal, Quebec, Canada H4T 1A3  
Tel: 705-721-1212 Fax: 705-722-6031  
napoleonfireplaces.com

Authorized Dealer

